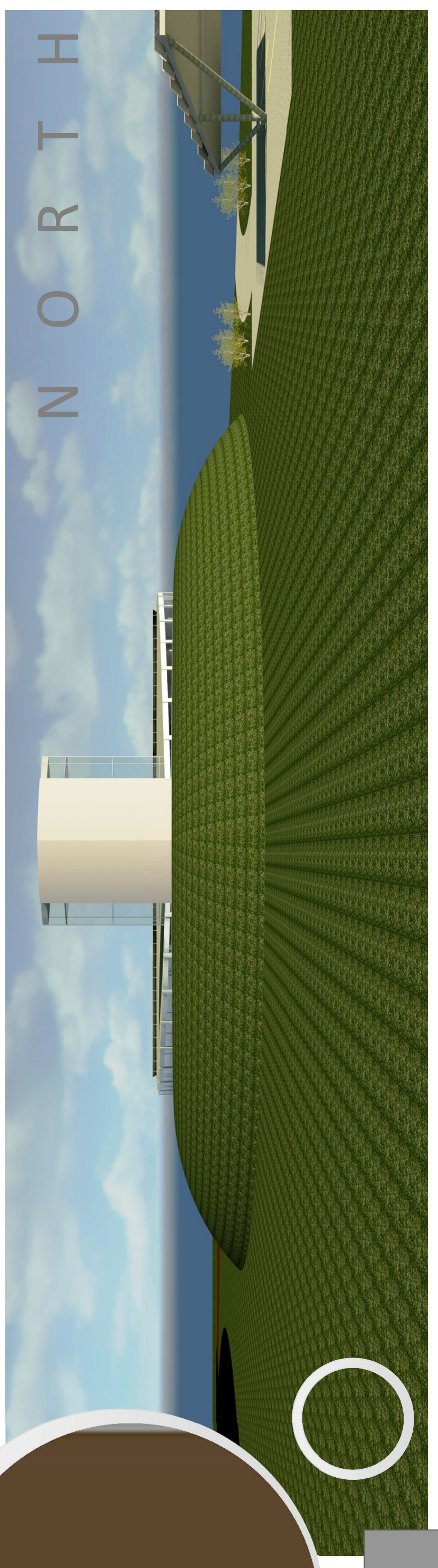


N O R T H



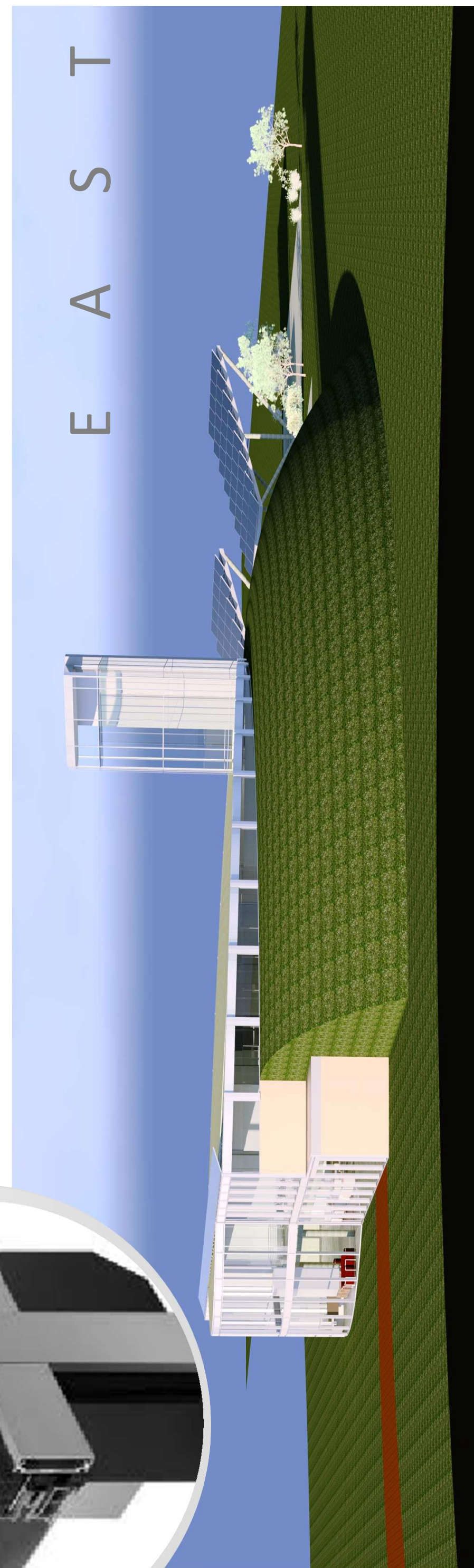
Earth Berm: Acts as insulation to maintain constant indoor temperature and minimize building heat loss. Combined with exterior wall SIP panels, the earth berms effective R-value is 45.

S O U T H

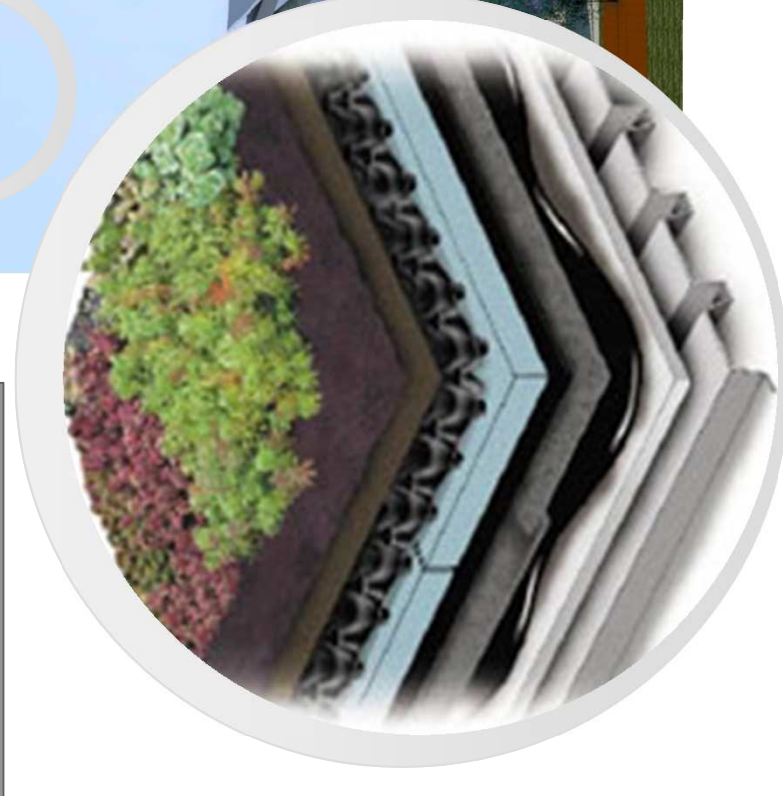


South Face and Solar Chimney: Thermal glazing curtain wall system with a low U-value of 0.2-0.4 to minimize thermal loss and a high SHGC (0.30 to 0.60) to optimize winter solar gain. Clerestories: Operable custom windows with a high SHGC (0.30 to 0.60) and low-e coating to help with overheating.

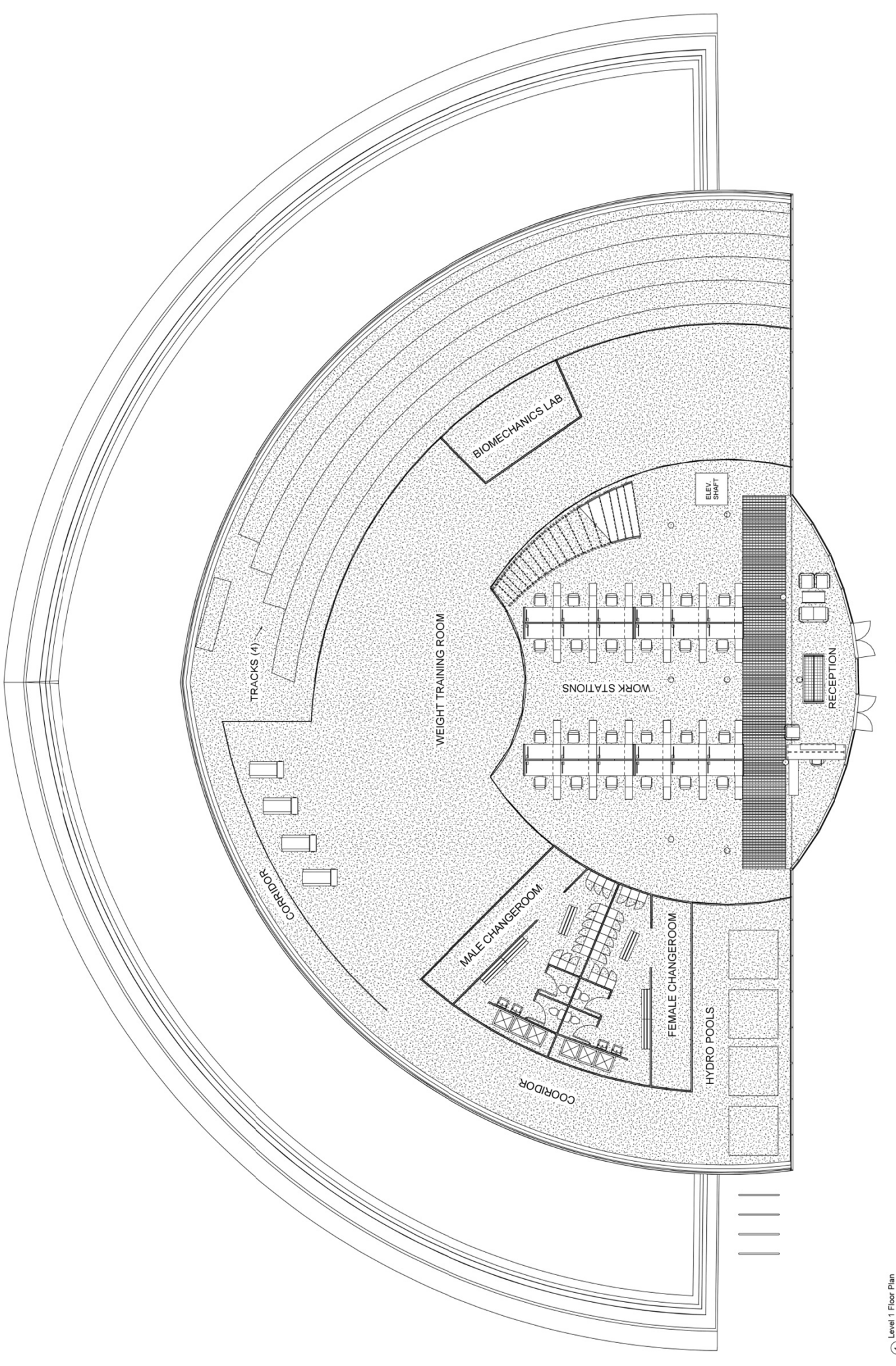
E A S T



Roof: Extensive green roof with an 8" layer of rigid insulation staggered and taped for thermal break yields effective R-value of 70. Roof based rain water collection uses gutter system to pre-filter water later used in hydro therapy pools.



W E S T



FLOOR PLANS

Open concept layout to facilitate an unrestricted and approachable environment while maximizing the natural air flow in the building. Modular partition walls encourage occupants to reorganize spaces for optimal use.

